

NEW OPERATING STRUCTURE FOR TOSHIBA'S HDD BUSINESS

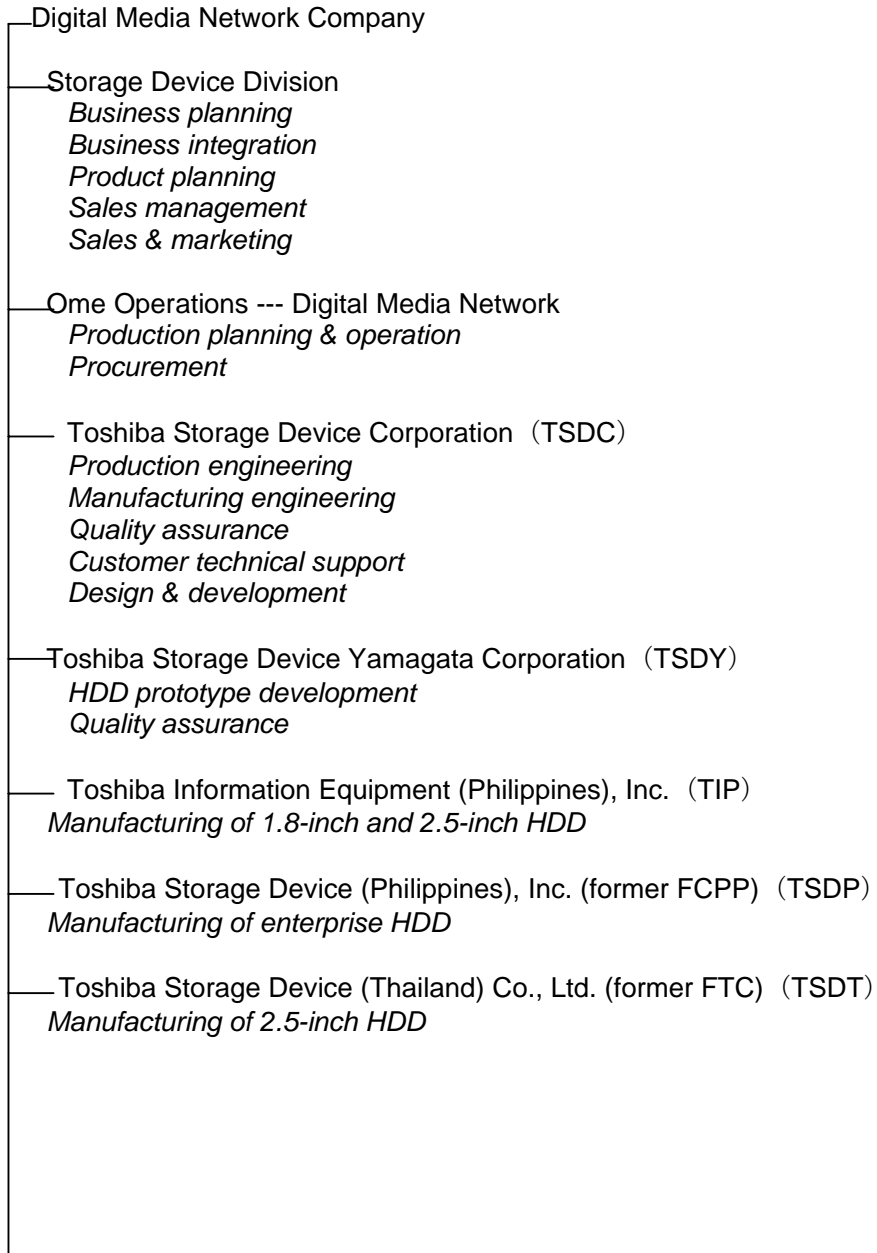
01 October 2009, Tokyo -Toshiba Corporation (TOKYO: 6502) today announced that it has completed the transfer to its control of Fujitsu Limited's hard disk drive (HDD) business and that it will introduce a new operating structure for the HDD business.

On April 30, 2009, Toshiba and Fujitsu announced the conclusion of a definitive agreement on the transfer of Fujitsu's hard disk drive (HDD) business to Toshiba. The companies have now carried out all necessary procedures and today completed the transfer. Toshiba will promote maximization of synergy with Fujitsu's enterprise HDD business and technology, and expand its HDD business.

Under the new business structure, Toshiba will reinforce its already strong market position as a leading vendor of small form factor HDDs, expand its enterprise HDD business and technology, and develop SSD products for servers and enterprise storage systems by integrating its NAND flash memory technology with Fujitsu's enterprise HDD technology. Moreover, Toshiba will promote a winning performance in a severe business environment by expanding its product line-up and enhancing its ability to deliver competitive, high quality products. Toshiba's ultimate objective is to be an industry leader offering total storage solutions and services that meet a broad range of customer needs.

Toshiba HDD Operating Structure after October 1st

Toshiba Corporation



Outlines of New Companies

1. Company Name: Toshiba Storage Device Corporation (TSDC)
2. Capital: 350 million yen
3. Shareholding ratio: Toshiba Corporation 80.1%
Fujitsu Limited 19.9%
4. Representative director Kazuyoshi Yamamori
5. Location: 1-1, Shibaura 1-Chome, Minato-ku, Tokyo, Japan
6. Employees: approx. 1,000

1. Company Name: Toshiba Storage Device Yamagata Corporation (TSDY)
2. Capital: 10 million yen
3. Shareholding ratio: Toshiba Storage Device Corporation 100%
4. Representative Director Hiroshi Okamura
5. Location: 5400-2, Ooaza Higashine Kou, Higashine City, Yamagata, Japan
6. Employees: approx. 100

1. Company Name: Toshiba Storage Device (Philippines), Inc. (TSDP)
2. Capital: US\$ 113.3 million (approx. 11.3 billion yen)
3. Shareholding ratio: Toshiba Storage Device Corporation 100%
4. Representative director Isao Morita
5. Location: Carmelray Industrial Park, Canlubang, Calamba, Laguna, Philippines
6. Employees: approx. 3,000

1. Company Name: Toshiba Storage Device (Thailand), Co., Ltd. (TSDT)
2. Capital: 1 billion baht (approx. 3 billion yen)
3. Holding ratio: Toshiba Storage Device Corporation 100%
4. Representative director Minoru Iriko
5. Location: 60/90
(Navanakorn Industrial Estate Zone 3) Moo 19,
Phaholyothin Rd., Klongluang, Pathumthani 12120,
Thailand
6. Employees: approx. 3,900

-ends-



About Toshiba Europe Storage Device Division

Toshiba Europe Storage Device Division (SDD) has remained at the forefront of the storage industry for over 30 years and markets high quality hard disk drives to original equipment manufacturers (OEMs), system integrators and distributors within the EMEA region. Throughout its history, Toshiba SDD has pioneered the design and development of small form factor storage devices and set many of the industry standards for HDD technology. As one of the first companies to identify the need for high capacity, high performance storage solutions beyond notebook PCs, Toshiba's HDDs can be found inside the world's leading GPS navigation systems, portable media players and entertainment systems. The company also pioneered the development of automotive-grade HDDs and to date, leads in the automotive HDD segment with an 84% market share. The company is also spearheading the uptake of Temperature Enhanced Drives for industrial sector applications. Furthermore, Toshiba Europe Storage Device Division now offers its own line of portable external hard disk drives, combining style with uncompromising Toshiba hard disk drive technology.

Media Contacts:

Susan Nowack
Toshiba Europe GmbH, Storage Device Division
www.storage.toshiba.eu